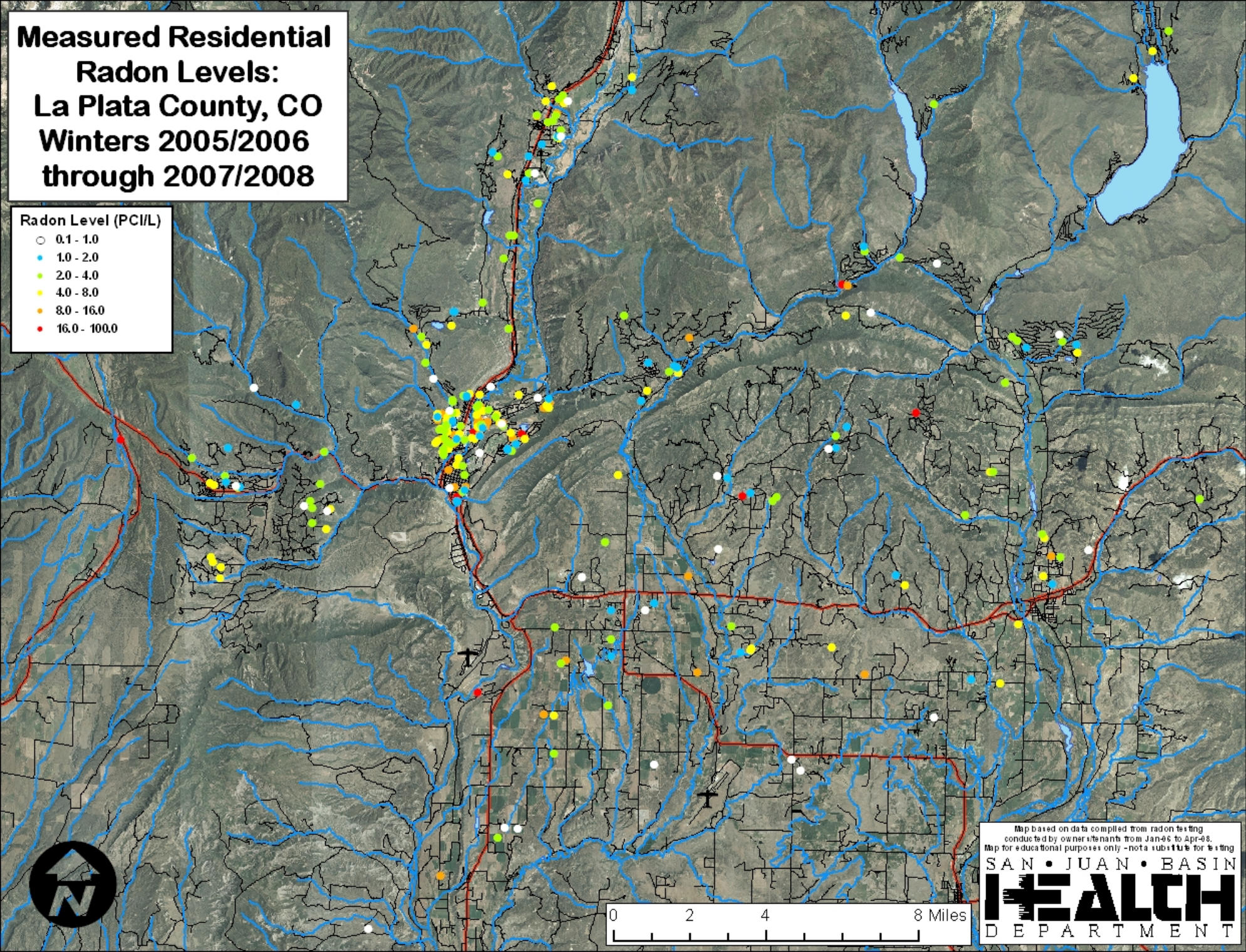


Measured Residential Radon Levels: La Plata County, CO Winters 2005/2006 through 2007/2008

- Radon Level (PCIL)
- 0.1 - 1.0
 - 1.0 - 2.0
 - 2.0 - 4.0
 - 4.0 - 8.0
 - 8.0 - 16.0
 - 16.0 - 100.0



Map based on data compiled from radon testing conducted by owner/tenants from Jan-06 to Apr-08. Map for educational purposes only - not a substitute for testing.

SAN • JUAN • BASIN
HEALTH
DEPARTMENT